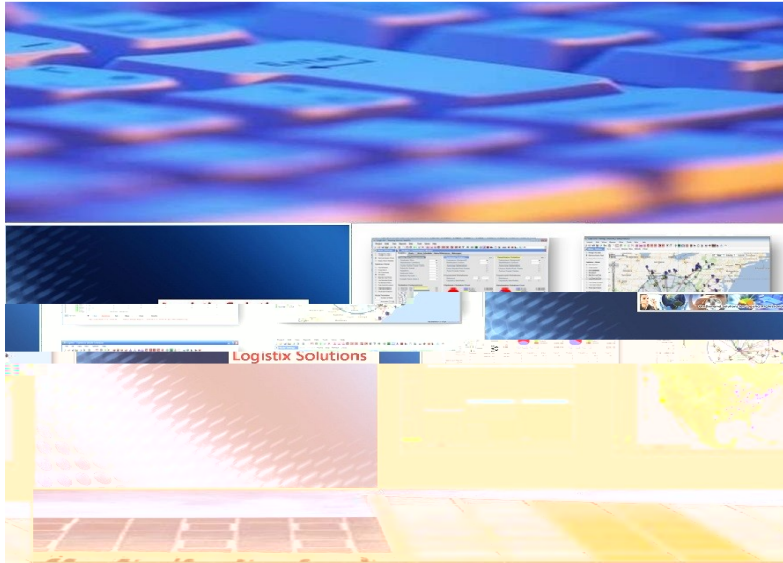


Logix 6.0®

New Features and Users in the News – January 2016



Logistix Solutions
On-Demand Solutions for Logistics Professionals

What's new at Logistix Solutions

Logix 6.0® has just been released with many new features and capabilities requested by our users to support distribution network design and transportation optimization.

With same day delivery and rapid fulfillment the new reality, Logix 6.0 focuses on optimizing customer service and shortening lead times. Whether through optimized distribution networks, strategically located fulfillment centers or better measurement and tracking of service metrics, Logix 6.0 provides our users with another competitive advantage in today's marketplace.

This month's New Users and Users in the News focuses on these unique capabilities and how to transition to the new Logix 6.0.

Robert Camozzo

President
Logistix Solutions

New Features and Users in the News – January 2016

Logix 6.0 Focus on Customer Service

Next day delivery is no longer the gold standard for customer fulfillment as companies now aim for same day delivery and guaranteed service levels.

To enable our users to optimize distribution networks around time-definite delivery standards, Logix 6.0 now includes **“Service Radius” limits for individual distribution centers and even products categories.** Users can set service limits of, for example, 4, 8 or 12 hours for different product categories and optimize the number and location of distribution facilities and service areas to achieve a required level of service.

To complement these optimization capabilities, Logix 6.0 also includes **new service time metrics and analytics** showing the percentage of demand or customers that can expect to receive less than 1 day, 1-2 day, 2-3 day and greater than 3 day service for any distribution model.

Logix 6.0 also has added several user-requested capabilities including three measures of demand. **Users can specify not only quantity and size but also count** for each customer or order. This can translate into weight, cubic feet and pallets or shipments, for example, for network design and transport optimization.

Logix 6.0 still reads existing Logix project files and imports data sets in older formats. The new version includes a new Excel Data Import Wizard to read the expanded Logix 6.0 data formats.














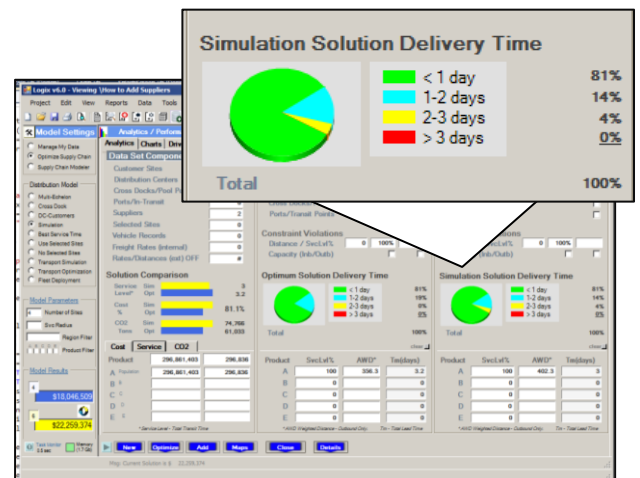
STRATEGIC LOCATION OF DISTRIBUTION FACILITIES TO FACILITATE RAPID FULFILLMENT OFTEN REQUIRES NETWORKS CAPABLE OF PROMISING DIFFERENT LEVELS OF SERVICE FROM SAME DAY DELIVERY TO FOUR-HOUR DELIVERY STANDARDS.

LOGIX 6.0 PROVIDES “BEST SERVICE” OPTIMIZATION CAPABILITIES ALLOWING USERS TO SET THE DESIRED SERVICE STANDARD AND OPTIMIZE THE NUMBER, LOCATION AND SERVICE AREA FOR STRATEGICALLY LOCATED FULFILLMENT CENTERS.

CONTACT INFO@LOGISTIXSOLUTIONS.COM OR 571.426.5951 FOR MORE INFORMATION.

Logix® 6.0 Network Optimization and integrated Transportation Optimization provides enhancements in the following areas:

-  Multi-tier Distribution Lead Time Tracking
-  Product Level Sourcing Optimization
-  Service Level Optimization
-  What-If Analysis and Simulation
-  Contingency Planning and Risk Mitigation
-  Transportation Delivery Time Optimization
-  Route Scheduling and Delivery Planning
-  Minimum Transport Cost at Any Level
-  Pop Up Detail and Summary Reports
-  Three Level Demand Specification
-  Expanded International Geocoding

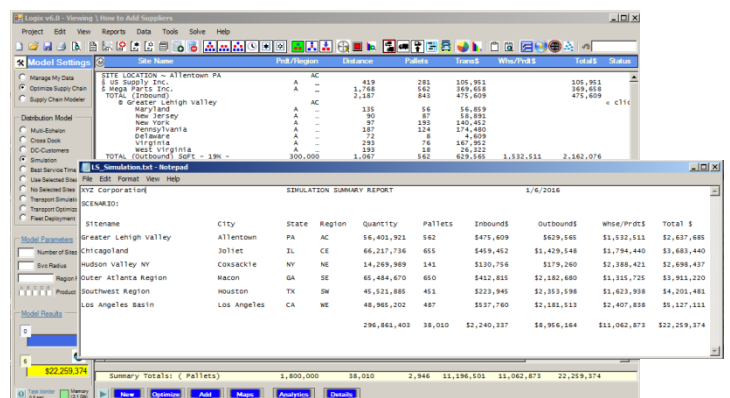
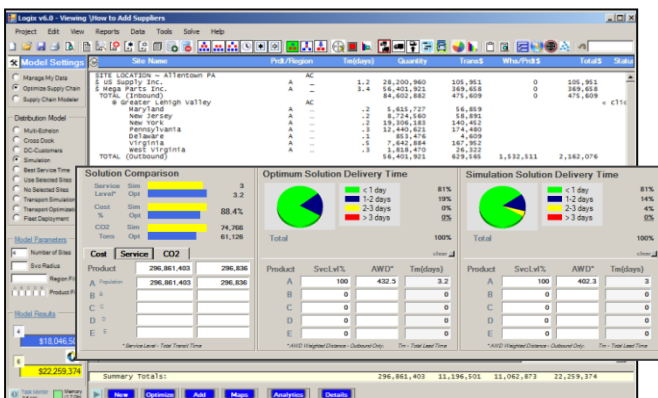


Logix® 6.0 Distribution Network Design Software Service Analytics Screen

Logix 6.0 Optimizing Service and Supply Chain Performance

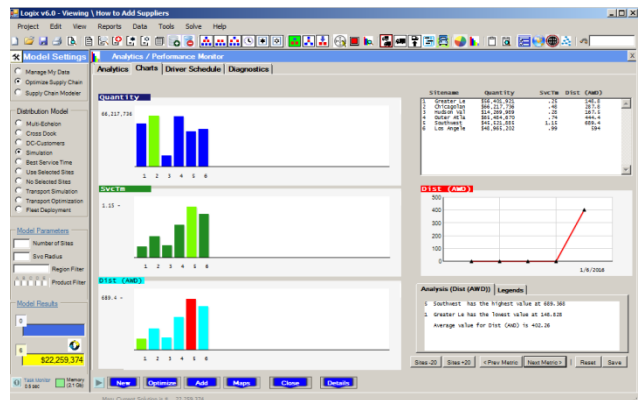
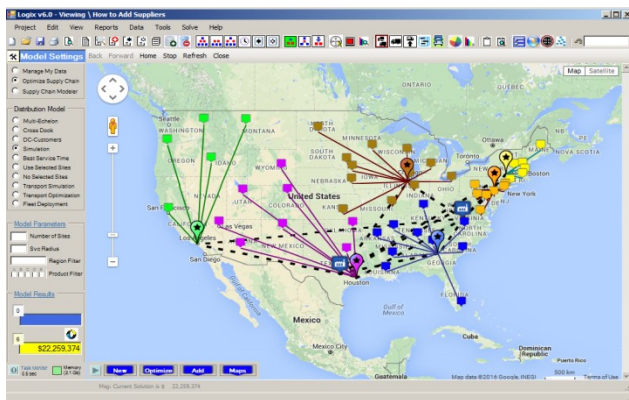
New service optimization parameter settings in Logix 6.0 include:

- Distance, Time (End-to-End) or Delivery Time display - Logix 6.0 calculates transit time (days) and optimizes delivery service for end-to-end supply chain performance or delivery fulfillment only depending on user settings.
- Individual Service Radius for each Distribution Center and Product Category
- Service Radius Optimization allows the following options:
 - Require all customers to be within the prescribed Service Radius
 - Assign customers outside of the Service Radius to their "Closest" distribution point
 - Omit any customer outside of the prescribed Service Radius
 - Display only customers that violate prescribed Service Radius parameters.



Logix® 6.0 Service Time Optimization

Pop-Up Solution Summary Report



Product Level Sourcing Optimization

Service Time Performance Metrics

For more information on the Logistix Solutions suite of products, visit our website at www.logistixsolutions.com contact Logistix Solutions at 571.426.5951 or e-mail info@logistixsolutions.com.

LOGISTIX SOLUTIONS – Technology for Logistics Professionals

Logistix Solutions was established in 2006 as a software and consulting company to provide premier technology solutions and in-depth industry knowledge for logistics professionals. We offer award-winning, on-demand Supply Chain Planning and Execution applications at a revolutionary value for rapid ROI and benefit realization.

- ✦ *Supply Chain Planning and Execution (SCP&E) software solutions offered:*
 - *Distribution Network Design and Supply Chain Optimization*
 - *Sourcing and Procurement Optimization*
 - *Service Time Optimization*
 - *Product Flow and Inventory Optimization*
 - *Transportation Optimization*
 - *Transportation Resource Scheduling and Execution*
 - *Transportation Management System*
- ✦ *Support, training and consulting services provided by experienced supply chain practitioners and logistics software experts.*

Based on extensive development working with Fortune 1000 companies, Logistix Solutions provides full-featured, on-demand supply chain solutions and consulting services for commercial real estate services firms, retailers, manufacturers, third party logistics providers, consultants, food and beverage and other distributors to support strategic planning and logistics execution requirements.

Again this year, Logistix Solutions is proud to have won prestigious awards from Food Logistics, Supply and Demand Chain Executive and Inbound Logistics.

For more information on these awards and publications, visit our website at www.logistixsolutions.com/InTheNews.



For more information on the Logistix Solutions suite of products, visit our website at www.logistixsolutions.com contact Logistix Solutions at 571.426.5951 or e-mail info@LogistixSolutions.com.